

AtlasX

Next-Gen Commercial Refueling

9850G Electronic Ultra High Flow Dispensers

Introducing AtlasX 9850G commercial series.

The 9850G series dispensers are engineered to meet the demanding needs of commercial and fleet fueling operations. Designed for durability and reliability, these dispensers feature rugged galvanized steel frames and come in a variety of configurations.

The AtlasX ultra high flow fuel dispensers ensure fast and accurate fuel delivery. The ability of lane-oriented or side-load options make them adaptable to various fueling setups. Pair with the AtlasX Satellite dispenser or TW3 Combo and fuel both saddle tanks simultaneously.

Utilizing industry standard current loop protocol or Pulse Output to communicate with Gasboy's PRIME Controllers or other 3rd party controllers for reliable and accurate fuel management.

The heavy-duty steel construction, along with its compatibility of 100% biodiesel applications, guarantees long-term durability and future-proof performance.



*Front Load Model Shown



9850G AtlasX Features

Model number	Description	Type	Hoses	Products	Register	Flow Rating
9850GX	Single, Front Nozzle	Dispenser	1	1	Elec	50 GPM
9850GX	Single, Side Nozzle	Dispenser	1	1	Elec	50 GPM
9850GXTW1	Twin, Front Nozzle	Dispenser	2	1	Elec	50 GPM
9850GXTW1	Twin, Side Nozzle	Dispenser	2	1	Elec	50 GPM
9850GXTW2	Twin, Front Nozzle	Dispenser	2	2	Elec	50 GPM
9850GXTW2	Twin, Side Nozzle	Dispenser	2	2	Elec	50 GPM
9850GXTW3	Combo Dispenser	Dispenser	2	2	Elec	50 GPM

Feature	Description	9850G
Approvals	Safety, UL and cUL Listed W&M, NCWM, Measurement Canada (MC)	S S
Working Pressure	50 psi maximum	S
Unit of Measure	Gallons/Liters Selectable	S
Filters	Internal strainer External canister type	S O
Piping	Internal fuel piping	1 1/4"
Discharge	Hose connection-NPT	1"
Satellite Piping	Satellite piping connections (S) – dispenser only	O
Inlet	Island connection-NPT	2"
Junction Box	Field wiring junction box	S
Housing	G30 Galvanized steel	13GA
Panels/Sheathing	Lockable removeable-precoated galvanized steel 2mm thick Lockable removeable-stainless steel-22 gauge	S O
Brand panel	Lighted brand panel	O
Meter	Liquid controls 6 step rotary PD Meter	S
Calibration	Electronic	S
Display Power	Power Fail backup	S
Solenoid Valve	2-stage valve for preset operations (PP)	S
Totalizer	Electronic Totalizer 10 digits and display 6-digits on LCD display	1 1/2"
Connectivity	2-wire communication protocol(current-loop) Pulse Output, Dual channel	S O

Operating Environment

Environment	Range	
Relative humidity	20% to 95% non-condensing	S
Electronics Minimum Ambient Temperature	-22°F (-30° C)	S
Electronics Maximum Ambient Temperature	131°F (55° C)	S
Hydraulics Minimum Ambient Temperature	29°C (-20°F)	S
Hydraulics Maximum Ambient Temperature	52°C (125° F)	S



1 Year Warranty

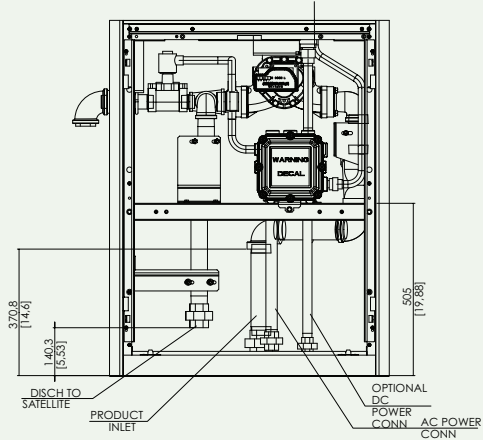
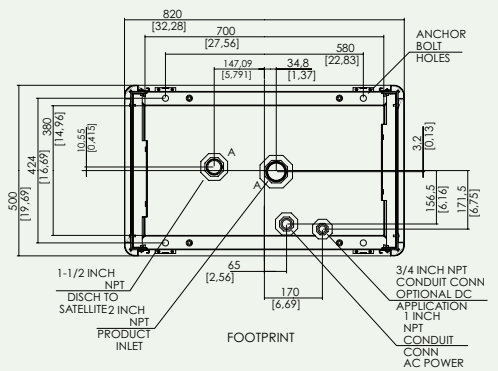
Commercial and Retail Pumps and Dispensers are warranted against defects in material and workmanship for 12 months from date of installation or 24 months from date of original invoice, whichever occurs first. The PRIME factory installed fuel management system electronics are also warranted against defects in material and workmanship for 12 months from date of installation or 24 months from date of original invoice. Warranty coverage for AtlasX and AtlasX PRIME includes parts and labor. Field-installed kits are warranted against defects in material and workmanship for 12 months from date of installation or 24 months from date of original invoice, whichever occurs first. The warranty coverage is for parts only.

S = Standard
O = Optional
– = Not available

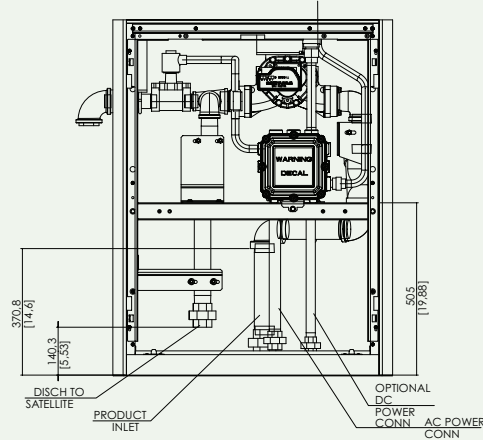
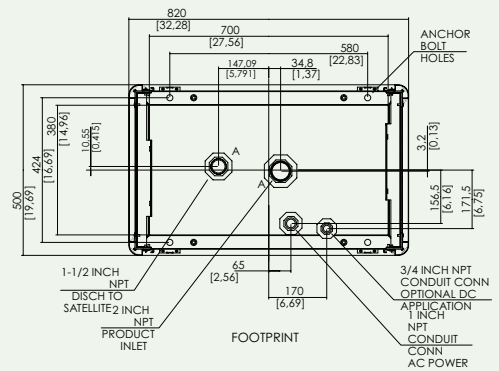
Technical Specification and Foundation Layout

Measurements in mm (Measurements in inches)

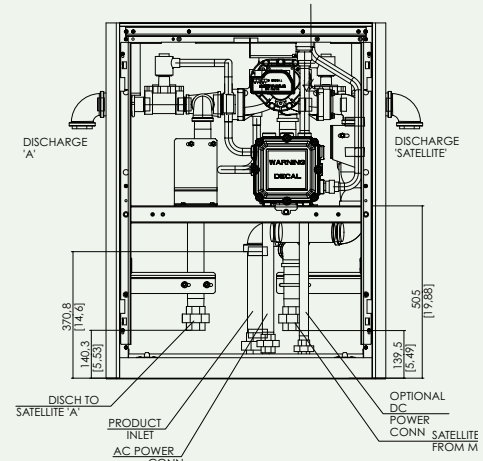
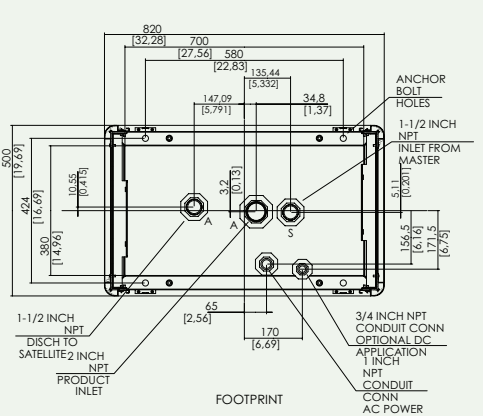
9850GX



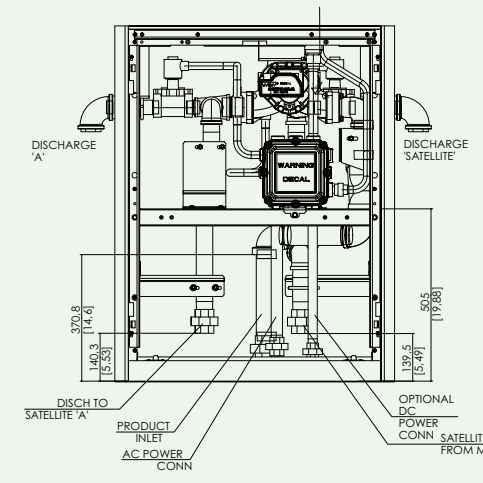
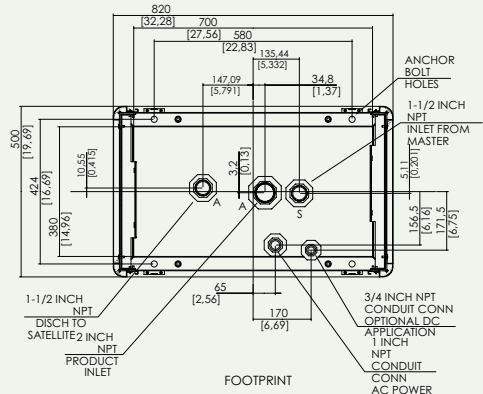
9850GXTW1



9850GXTW2



9850GXTW3



AtlasX Key Enhancements



Best-in-class engineering

Pulser ensures precise measurement Interfaces with various FMS to track and control fuel dispensing, facilitates more accurate transactions by automating data capture process.



Modern design

Taller, sleeker design with smooth modern lines built with painted galvanized-steel panels that enable greater durability.



Future-proof

Modern Encore Electronics platform provides the foundation for future applications (remote diagnostics, remote software updates, secure payments etc.)

