



A VONTIER™ COMPANY

AtlasX

Next-Gen Commercial Refueling

8850G Electronic Retail Ultra High Flow Dispensers

Introducing AtlasX 8850G retail series.

The 8850G series dispensers are engineered to meet the demanding needs of retailers' fueling operations. Designed for durability and reliability, these dispensers feature rugged galvanized steel frames and are available in a variety of configurations.

The AtlasX ultra high-flow fuel dispensers ensure fast and accurate fuel delivery. They offer front-load or side-load options, making them adaptable to various fueling setups. Pair them with the AtlasX Satellite dispenser or TW3 Combo to fuel both saddle tanks simultaneously.

The heavy-duty steel construction, along with compatibility of 100% biodiesel applications, guarantees long-term durability and future-proof performance.

Utilizing industry-standard current loop protocol, these dispensers communicate with third-party point-of-sale systems for reliable and accurate fuel management.



Model number	Description	Type	Hoses	Products	Register	Flow Rating
8850GX	Single, Front Nozzle	Dispenser	1	1	Elec	50 GPM
8850GX	Single, Side Nozzle	Dispenser	1	1	Elec	50 GPM
8850GXTW1	Twin, Front Nozzle	Dispenser	2	1	Elec	50 GPM
8850GXTW1	Twin, Side Nozzle	Dispenser	2	1	Elec	50 GPM
8850GXTW2	Twin, Front Nozzle	Dispenser	2	2	Elec	50 GPM
8850GXTW2	Twin, Side Nozzle	Dispenser	2	2	Elec	50 GPM
8850GXTW3	Combo Master/ Satellite, Front Nozzle	Dispenser	2	2	Elec	50 GPM

Feature	Description	8850G
Approvals	Safety, UL and cUL Listed W&M, NCWM, Measurement Canada (MC)	S S
Working Pressure	50 psi maximum	S
Unit of Measure	Gallons/Liters Selectable	S
Filters	Internal Strainer External Canister Type	S O
Piping	Internal Fuel Piping	1 1/4"
Discharge	Hose Connection-NPT	1"
Satellite Piping	Satellite piping connections (S) – dispenser only	O
Inlet	Island connection-NPT	2"
Junction Box	Field wiring junction box	S
Housing	G30 Galvanized Steel	13GA
Panels/Sheathing	Lockable removeable-precoated galvanized steel 2mm thick Lockable removeable-stainless steel-22 gauge	S O
Brand Panel	Lighted brand panel	O
Meter	Liquid controls 6 step rotary PD Meter	S
Calibration	Electronic	S
Display Power	Power Fail Backup	S
Solenoid Valve	2-stage valve for preset operations (PP)	S
Totalizer	Electronic Totalizer 10-digits and display 6-digits on LCD display	1 1/2"
Connectivity	2-wire communication protocol(current-loop) Pulse Output Dual channel	S O
Electronic Computer	Electronic computer: Displays money, volume, and PPU	S
Electronic Display	Money, Volume, and PPU includes integrated totalizer and power reset	S

Operating Environment

Environment	Range	8850G
Relative Humidity	20% to 95% non-condensing	S
Electronics	Minimum Ambient Temperature: -22°F (-30° C) Maximum Ambient Temperature: 131°F (55° C)	S S
Hydraulics	Minimum Ambient Temperature: 29°C (-20°F) Maximum Ambient Temperature: 52°C (125° F)	S S



1 Year Warranty

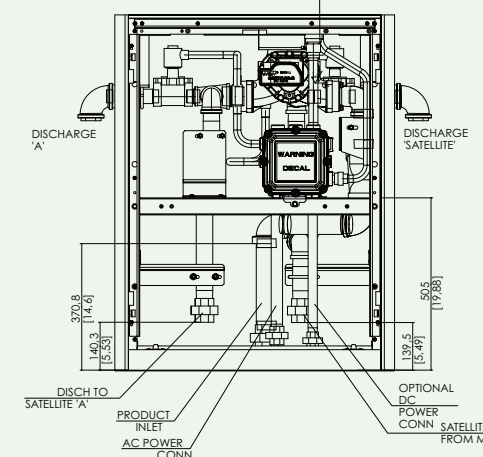
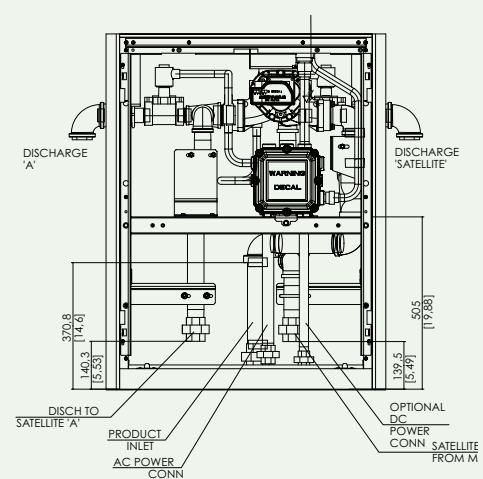
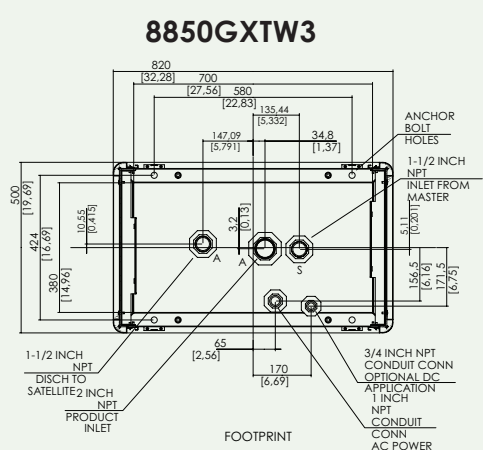
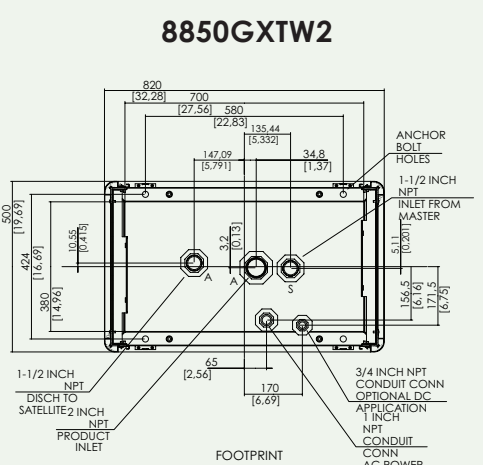
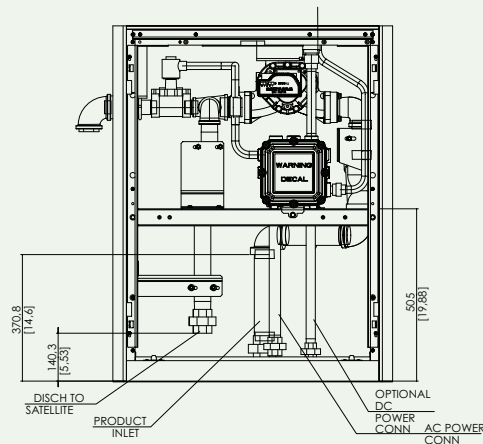
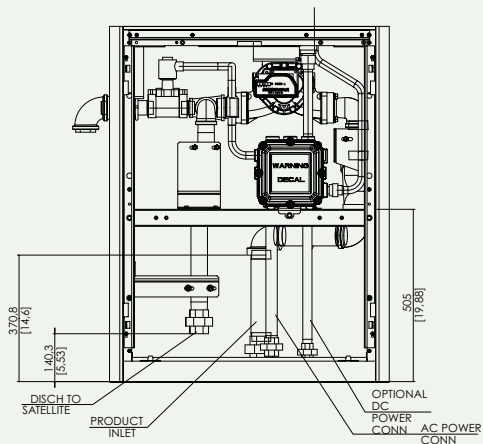
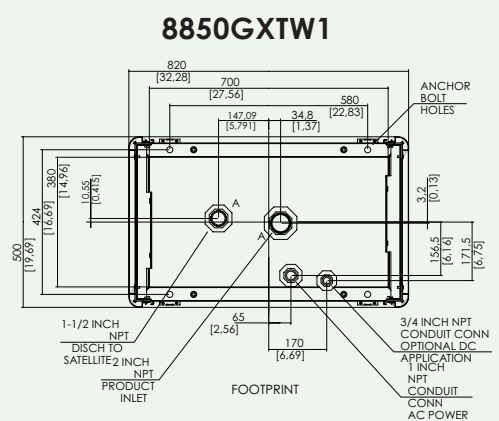
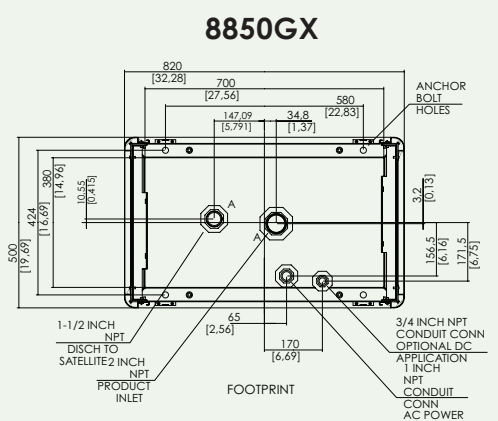
Commercial and Retail Pumps and Dispensers are warranted against defects in material and workmanship for 12 months from the date of installation or 24 months from the date of original invoice, whichever occurs first. The PRIME factory-installed fuel management system electronics are also warranted against defects in material and workmanship for 12 months from date of installation or 24 months from date of original invoice. Warranty coverage for AtlasX and AtlasX PRIME includes parts and labor. Field-installed kits are warranted against defects in material and workmanship for 12 months from date of installation or 24 months from the date of the original invoice, whichever occurs first.

The warranty coverage is for parts only.

S = Standard
O = Optional

Technical Specification and Foundation Layout

Measurements in mm (Measurements in inches)



AtlasX Key Enhancements



Best-in-class engineering

Pulser ensures precise measurement
Interfaces with various FMS to track and
control fuel dispensing and facilitates more
accurate transactions by automating the
data capture process.



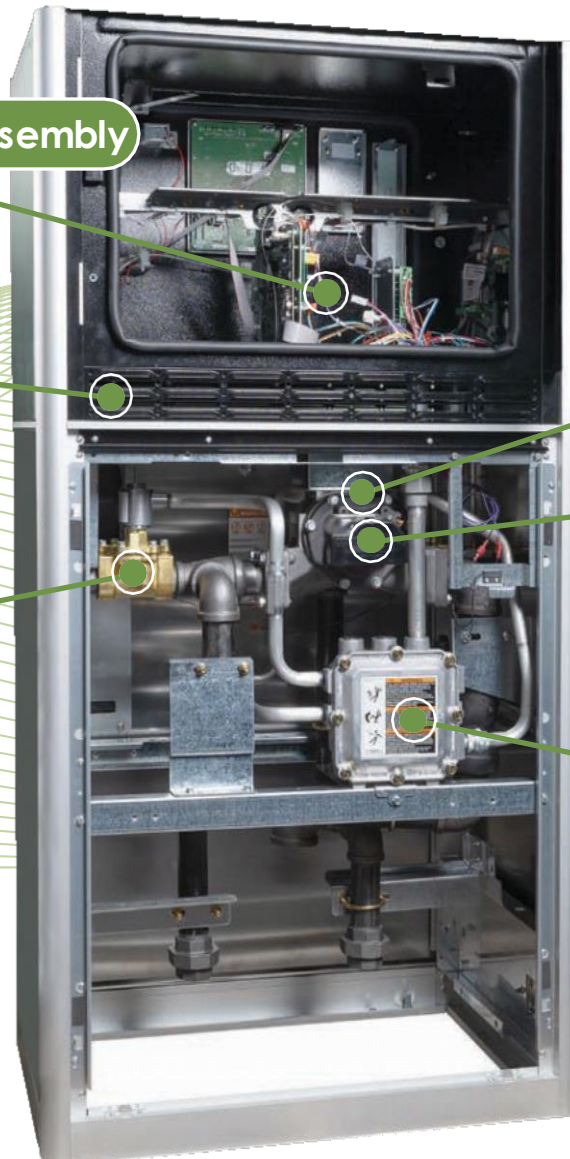
Modern design

Taller, sleeker design with smooth
modern lines built with painted
galvanneal steel panels that
enable greater durability.



Future-proof

Global Electronics platform
provides the foundation for future
applications (remote diagnostics,
remote software updates, secure
payments, etc.)



Electronic Board Assembly

UL Air Gap

Solenoid Valve

LC Meter

Pulser

Junction Box



GASBOY

A VONTIER COMPANY